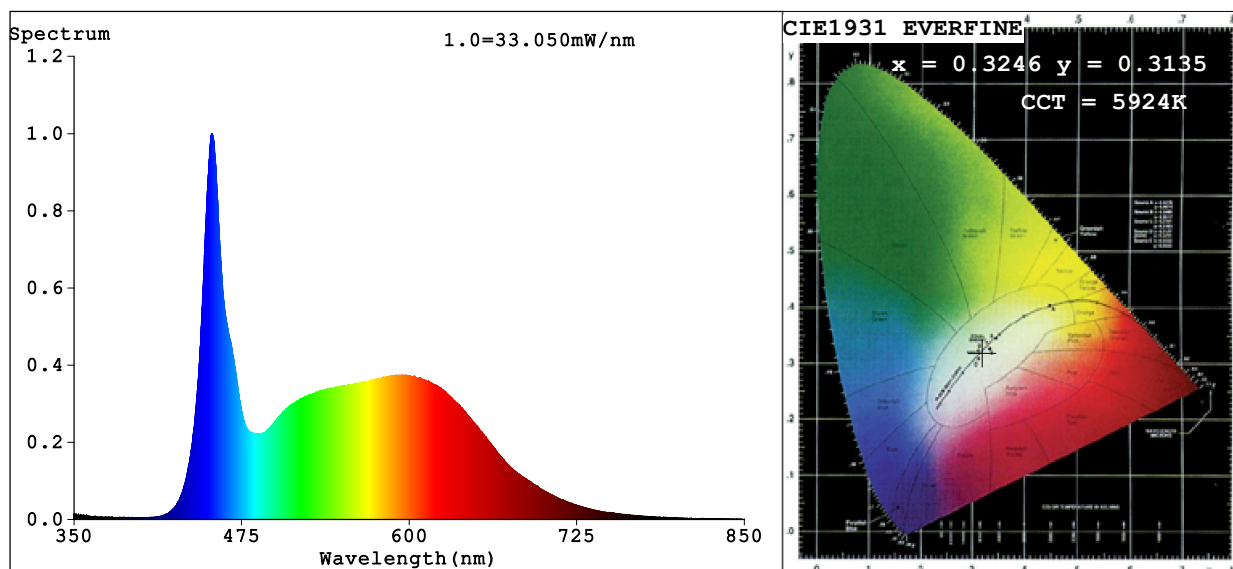


Spectrum Test Report



Color Parameters:

Chromaticity Coordinate: $x=0.3246$ $y=0.3135$ $u'=0.2124$ $v'=0.4616$

CCT=5924K (Duv=-0.0111) Dominant WL:Ld =-568.7nm Purity=8.6%

Ratio:R=17.2% G=76.6% B=6.3%; Peak WL:Lp=452.9nm FWHM=19.5nm

Render Index:Ra=93.2 CRI=91.1 TM30:Rf=86 Rg=102

R1 =94 R2 =95 R3 =95 R4 =95 R5 =93 R6 =89 R7 =93

R8 =92 R9 =83 R10=93 R11=95 R12=68 R13=95 R14=97 R15=97

Photo Parameters:

Flux = 815.8 lm Eff. : 63.56 lm/W Fe = 2.933 W

Electrical parameters:

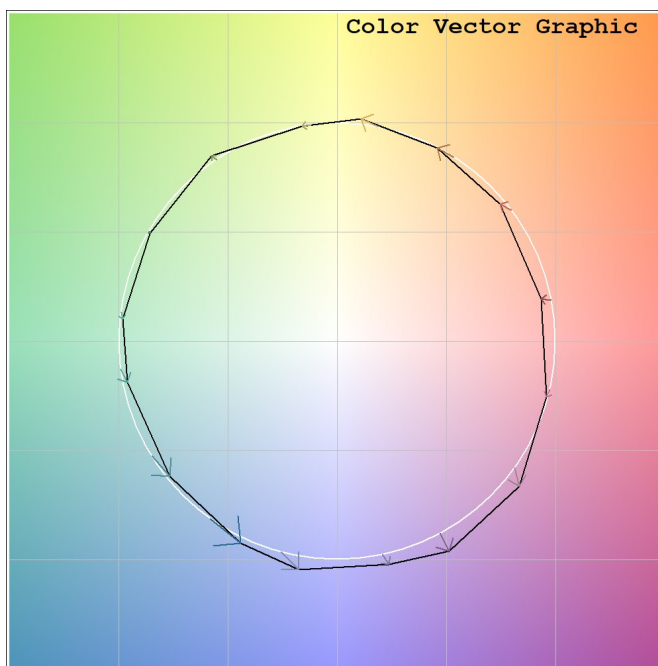
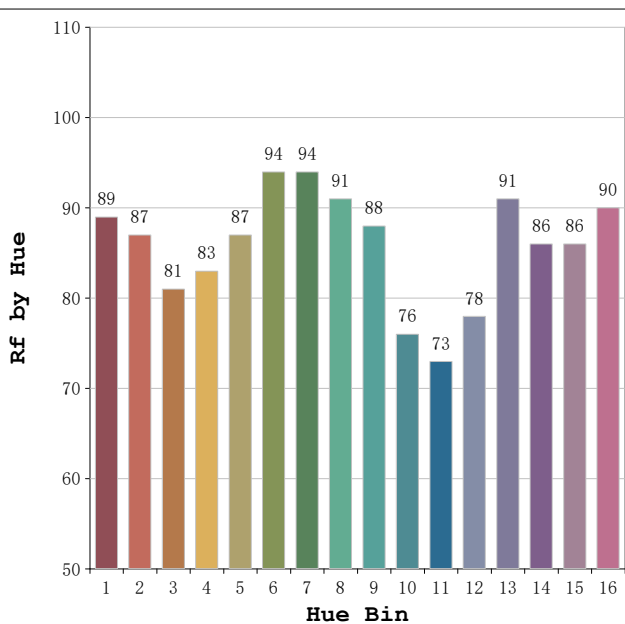
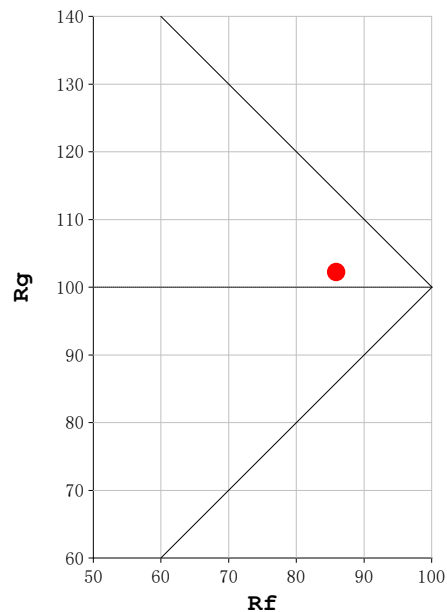
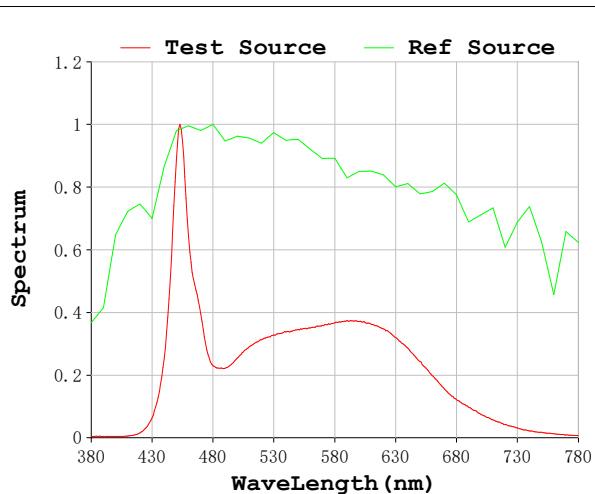
V = 23.998 V I = 0.5349 A P = 12.84 W PF = 1.000

Status: Integral T = 1269 ms Ip = 50114 (76%)

Model:Ecoled neón Kenya 6000
Tester:Sergio Carneros
Temperature:27Deg
Manufacturer:Luz Negra S.L

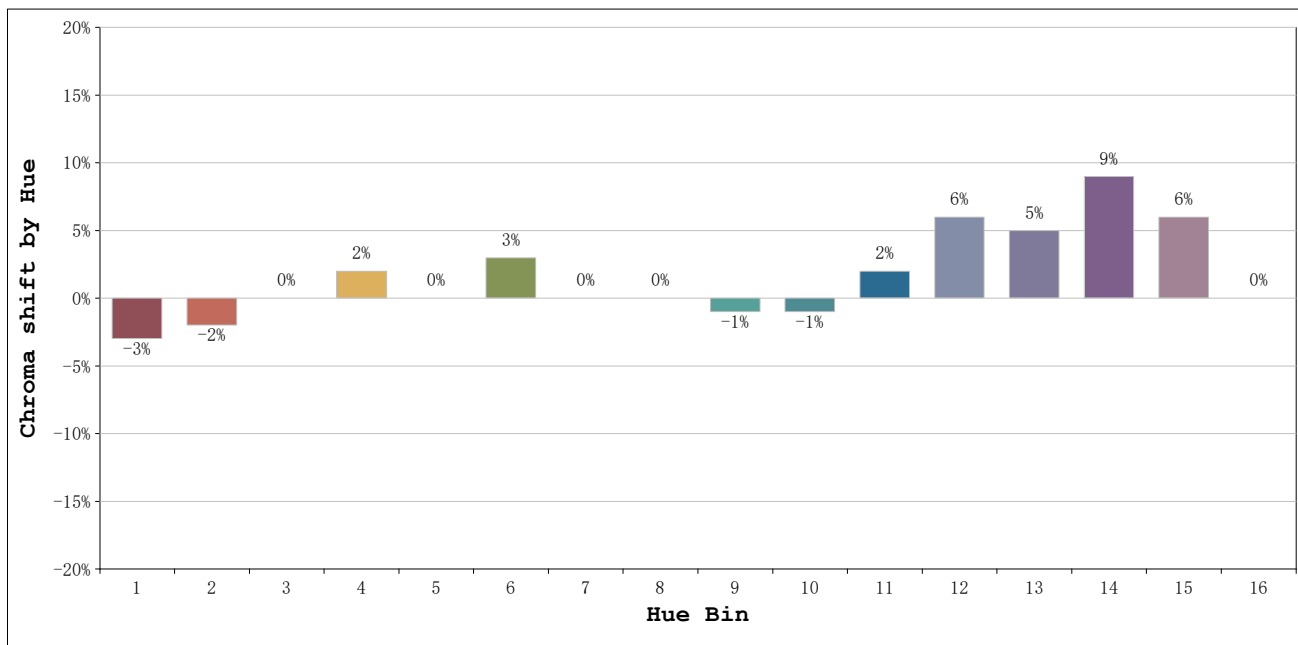
Number: 10.269
Date:2025-08-26 12:00:47
Humidity:40%
Remarks:100cm de Neón

Rf: 86 **CCT: 5924 K** **u': 0.2124**
Rg: 102 **Duv: -0.0111** **v': 0.4616**



Model:Ecoled neón Kenya 6000
 Tester:Sergio Carneros
 Temperature:27Deg
 Manufacturer:Luz Negra S.L

Number: 10.269
 Date:2025-08-26 12:00:47
 Humidity:40%
 Remarks:100cm de Neón



			Graphic shift(%)	
Hue Bin	Hue Angle	Rf	Chroma	Hue
1	0.0° - 22.5°	89	-3	1
2	22.5° - 45.0°	87	-2	5
3	45.0° - 67.5°	81	0	9
4	67.5° - 90.0°	83	2	8
5	90.0° - 112.5°	87	0	4
6	112.5° - 135.0°	94	3	1
7	135.0° - 157.5°	94	0	0
8	157.5° - 180.0°	91	0	3
9	180.0° - 202.5°	88	-1	6
10	202.5° - 225.0°	76	-1	12
11	225.0° - 247.5°	73	2	18
12	247.5° - 270.0°	78	6	10
13	270.0° - 292.5°	91	5	2
14	292.5° - 315.0°	86	9	0
15	315.0° - 337.5°	86	6	-5
16	337.5° - 360.0°	90	0	-3

Model:Ecoled neón Kenya 6000
 Tester:Sergio Carneros
 Temperature:27Deg
 Manufacturer:Luz Negra S.L

Number: 10.269
 Date:2025-08-26 12:00:47
 Humidity:40%
 Remarks:100cm de Neón